

CONFORMED SET 01-20-2021



CONSULTANTS

GODSHALL KANE O'ROURKE ARCHITECTS, LLC
300 Brookside Avenue
Burlington, NJ 08020
Ambler, PA 19002
T: 215.646.2003
www.gkoarchitects.com



WALDRON MERCY ACADEMY
513 MONTGOMERY AVE.
MERION STATION, PA 19066

REVISIONS		
1	ADDENDUM 1	03-02-2020
2	ADDENDUM 2	03-03-2020
3	ADDENDUM 3	03-04-2020
4	ADDENDUM 4	03-06-2020
5	REVISION 5	01-20-2021
DRAWN BY: MK / LL / AW		
REVIEWED BY: MO		
JOB #: 2449		
SHEET TITLE		


INTERIOR
ELEVATIONS

A5.0

SCALE:	AS NOTED
DATE:	02-17-2020



GENERAL NOTES

1. ADJACENT CEILING TO CEILING - FULL THE STARTING POINTS PROVIDED,  IS CENTERED WITHIN ROOM.
2. ALL LIGHT FIXTURE DIMENSIONS SHOWN ARE TO CENTERLINE OF FIXTURE UNLESS NOTED OTHERWISE.
3. ALIGN FACE OF SOFFIT WITH FACE OF FINISH WALL OR COLUMN UNLESS UNLESS NOTED OTHERWISE.
4. ALL DOWNLIGHTS ARE CENTERED IN GROUND CEILING / SOFFITS, UNLESS NOTED OTHERWISE.
5. WHERE EXISTING CEILING TO REMAIN, PLACE NEW LIGHT FIXTURES IN EXISTING FIXTURE LOCATIONS UNLESS NOTED OTHERWISE. IF NO EXISTING PLASTER CEILING AS REQUIRED, PANT SURROUND TO MATCH ADJACENT SUFF.
6. ALL EXPOSED EXISTING OR NEW DUCTWORK, PIPING AND CONDENSATE SHALL BE PAINTED BY MATCHING MATERIAL FINISHES TO MATCH ADJACENT WALLS UNLESS NOTED OTHERWISE OR INSTRUCTED BY THE ARCHITECT IN THE FIELD.
7. PANT ALL EXPOSED INTERIORS TO MATCH THE ADJACENT SURFACE COLOR UNLESS NOTED OTHERWISE OR INSTRUCTED BY THE ARCHITECT IN THE FIELD.
8. GO TO REFERENCE W- SERIES DRAWINGS FOR CEILING PATCHING AT REMOVED OR RELOCATED MECHANICAL SYSTEMS.
9. IF NO MECHANICAL IS SHOWN ON ROP PLANS, REFERENCE THE ELECTRICAL DRAWINGS FOR LIGHTING LOCATIONS.
10. IF NO LIGHTING FIXTURES ARE SHOWN IN PLAN, REFERENCE THE MECHANICAL DRAWINGS FOR SUPPLY AND RETURN DIFFUSERS LOCATIONS.
11. GO TO REMOVE AND RETAIN EXISTING SHELVING FOR ALL ROOMS THAT RECEIVE NEW FLOOR INCLUDING FLOORS, PAINTING, CEILING ETC.
12. SUBCONTRACTOR TO VERIFY EXISTING CONDITIONS PRIOR TO INSTALLING NEW CEILING GRD - VERIFY THE HEIGHT SPECIFIED ON THE ROP DWGS WILL WORK AND NOT INTERFERE WITH EXISTING CONDITIONS.



513 MONTGOMERY AVE.
MERION STATION, PA 19066

AS NOTED

02-17-2020

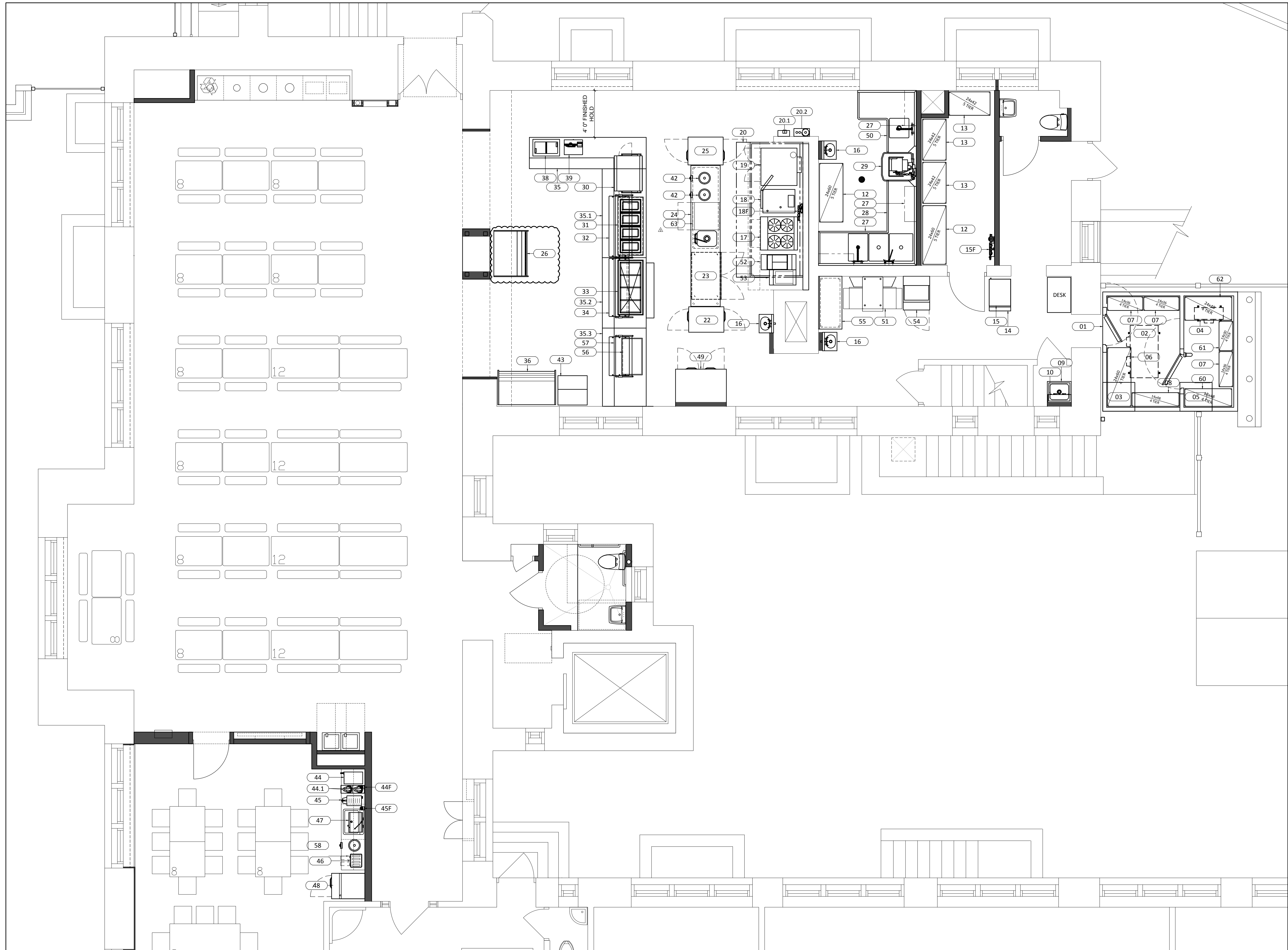
CONFORMED SET 01-20-2021

ABBREVIATION	MATERIAL / DESCRIPTION	MANUFACTURE / STYLE / COLOR / MISC.	REMARKS
FINISHES - FLOOR & BASE:			
T-F1	COLORBODY PORCELAIN TILE	STYLE [TBD]; DALTILE - REMINISCENT <u>OR</u> DALTILE - VOLUME COLOR; (TO BE SELECTED FROM PRODUCTS FULL RANGE OF COLOR OPTIONS SIZE: 12" X 24 & 12" X 12	- WHERE FLOOR TILE MEETS WALL TILE, PROVIDE SCHLUTER SYSTEMS DILEX-HKS STAINLESS STEEL COVE BASE. TYPICAL @ ALL ROOMS - AT "OUTSIDE" CORNERS PROVIDE MATCHING BULLNOSE TILE (3" X 12") - GC TO PROVIDE BID FOR MOST EXPENSIVE TILE TYPE & SIZE FROM PRODUCTED NOTED. OWNER TO REVIEW OPTIONS & SELECT DURING SUBMITTAL PHASE.
T-F2	COLORBODY PORCELAIN TILE		
T-F3	QUARRY TILE	DALTILE - QUARRY TILE COLOR; (TO BE SELECTED FROM FULL RANGE OF COLOR OPTIONS); SIZE: 6" X 6" / TILE LAYOUT: BRICK PATTERN	WHERE INSTALLED, PROVIDE MATCHING 6" HIGH TILE BASE W/ INTEGRAL COVE
T-F4	CERAMIC TILE	DALTILE - KEYSTONES SIZE: 2" X 2" / COLOR A & B; (TO BE SELECTED FROM TILE PRICE GROUPS 1 & 2) 12" HIGH INTEGRAL COVE MATCHING BASE W/ BULLNOSE TOP EDGE WHERE INSTALLED OVER EXISTING TILE WALL	
RB-1	RUBBER BASE	ROPPE - PINNACLE - VULCANIZED RUBBER BASE - 6" HIGH - COLOR: [TBD]	
FINISHES - WALL			
FRP	FIBER REINFORCED PANEL	CRANE COMPOSITES GLASBORD - CLASS A COLOR: [TBD]	
FRP-DECO	DECORATIVE FRP W/ CUSTOM DIGITAL GRAPHIC	MDC INTERIOR SOLUTIONS DIGITAL GLOSS WHITE FRP W/ FULL-BLEED CUSTOM DIGITAL GRAPHIC IN COLOR (DIGITAL IMAGE TO BE PROVIDED BY OWNER)	WHERE FRP PANELS ABUT, PROVIDE CLEAR SEALANT JOINT (NO T-BAR).
T-W1	COLORBODY PORCELAIN TILE	(SAME TILE AS T-F1)	AT OUTSIDE CORNER CONDITIONS, PROVIDE BULLNOSE TILE (3" X 12") IN MATCHING COLOR
T-W2	GLAZED CERAMIC	DALTILE - LINEAR COLOR; (TO BE SELECTED FROM PRICE GROUP 1 & 2) IN MATTE FINISH SIZE: 4" X 8" WALL TILE	AT OUTSIDE CORNER CONDITIONS, PROVIDE BULLNOSE TILE / TRIM (2" X 6") IN MATCHING COLOR
T-W3-A & T-W3-B	GLAZED CERAMIC @ KITCHEN	DALTILE - LINEAR COLORS; (TO BE SELECTED FROM PRICE GROUP 1 & 2) IN MATTE FINISH SIZE: 3" X 6" WALL TILE PATTERN OF A & B: [TBD]	AT OUTSIDE CORNER CONDITIONS, PROVIDE BULLNOSE TILE / TRIM IN MATCHING COLOR
T-W4	GLAZED CERAMIC @ TOILET ROOM	DALTILE - CLASSIC COLOR; (TO BE SELECTED FROM PRICE GROUP 1 & 2) SIZE & FINISH TO MATCH EXISTING WALL TILE	AT OUTSIDE CORNER CONDITIONS, PROVIDE BULLNOSE TILE / TRIM IN MATCHING COLOR
T-W5	GLAZED CERAMIC @ EX. ELEVATOR LOBBY	DALTILE - CLASSIC COLOR; (TO BE SELECTED FROM PRICE GROUP 1 & 2) SIZE: [TBD]	(NOTE: EXISTING CERAMIC TILE @ ELEVATOR AREA IS SIMILAR TO DALTILE - SEMI-GLOSS BISCUIT #K175 4X4)
FINISHES - PAINT			
P-1	PAINT (TYP. WHITE)	MANUF: SHERWIN WILLIAMS PRODUCT: (REF. SPEC.) COLOR: #	TYPICAL PAINT COLOR
P-2	PAINT (ACCENT)	MANUF: SHERWIN WILLIAMS PRODUCT: (REF. SPEC.) COLOR: #	TYPICAL ACCENT PAINT COLOR @ EXPOSED MECHANICAL DUCT
P-3	PAINT (ACCENT)	MANUF: SHERWIN WILLIAMS PRODUCT: (REF. SPEC.) COLOR: #	
P-B	PAINT (BLACK)	MANUF: SHERWIN WILLIAMS PRODUCT: (REF. SPEC.) COLOR: #	TYPICAL PAINT COLOR ABOVE ACOUSTICAL CEILING CLOUDS @ EXPOSED GWB CEILING, STRUCTURE & MEP ITEMS
P-C	PAINT (CEILING - WHITE)	MANUF: SHERWIN WILLIAMS PRODUCT: (REF. SPEC.) COLOR: #	TYPICAL PAINT COLOR @ GWB CEILINGS
P-EPOXY	EPOXY PAINT	MANUF: SHERWIN WILLIAMS PRODUCT: (REF. SPEC.) COLOR: #	HOLLOW METAL DOORS & FRAMES AT KITCHEN AREA / GWB SURFACES AT KITCHEN AREA
P-MTL	EXTERIOR PAINT @ METAL	MANUF: SHERWIN WILLIAMS PRODUCT: (REF. SPEC.) COLOR: #	
FINISHES - PLASTIC LAMINATE & SOLID SURFACING			
PLAM-#	PLASTIC LAMINATE @ CASEWORK (WHERE NOTED)	WILSONART / FORMICA PRODUCT: PREMIUM LAMINATE SERIES COLOR: [TBD]	
SSQ	SOLID SURFACE - QUARTZ AGGLOMERATE	DUPONT - QUARTZ COLOR: (TO BE SELECTED FROM GRADE 2 OR BELOW)	COUNTERTOP & BACKSPLASH, TYP.
FINISHES - CEILING			
APC-1	ACOUSTICAL PANEL CEILING	CERTAIN TEED - SYMPHONY F SIZE: 24" X 24" X 1 3/4" W/ 1/8" REVEAL EDGE #1362B-10F-1	PROVIDE ACOUSTICAL BATT INSULATION ABOVE "CLOUD" INSTALLATIONS PER MANUF. RECOMMENDATIONS FOR MAX. SOUND ABSORPTION
APC-2	ACOUSTICAL PANEL CEILING (2x2 KITCHEN) - SCRUB-ABLE	CERTAIN TEED - RX SYMPHONY SIZE: 24" X 24" X 3/4" W/ 1/8" SQUARE EDGE #1222-75-RX-S-1	HEALTHZONE / SCRUBBABLE
CLOUD	"CLOUD" CEILING ELEMENTS	CERTAIN TEED - TERMINUS TRIM PERIMETER METAL TRIM (TO SUPPORT APC-1 & COORDINATE W/ LIGHT FIXTURES)	
MISCELLANEOUS:			
STAIN. WD. TRIM	STAINED WOOD TRIM	(STAIN TO MATCH EXISTING "DARK STAIN" OF EXISTING WOOD TRIM IN AREA)	NEW TRIM PROFILES TO MATCH PROFILES OF EXISTING STAINED WOOD TRIM.
AP-1	ACOUSTICAL PANELS (TACKABLE)	MBI COLORSONIX TACKABLE / IMPACT 1.5" 6-7# (1818F-1560-ZIN) - NRC = 0.95 W/ Z-TRACK INSTALLATION W/ BEVELED EDGE DETAIL FABRIC: GUILFORD OF MAINE - STUDIO 54 #2966 - CELEBRITY #7045 - BLEACH CLEANABLE OR SIMILAR (TO BE CONFIRMED W/ OWNER)	REF. INTERIOR ELEVATIONS FOR LOCATIONS & SIZE OF PANELS
METAL LOCKERS	*	PENCO - VANGUARD - METAL LOCKERS Unit Size: 15" Width x 12" Depth x 78" Height * 5 Units w/ 2 Tiers each (Total of 10 lockers)	Closed Metal Base / Flat Metal Top / Finished End Panels / Provide lock hole cover plate for owner supplied padlocks / 1 Locker to be ADA compliant w/ signage
WINDOW PRIVACY FILM	-	3M - FASARA GLASS FINISHES - MILKY CRYSTAL (SH2MLCRX)	APPLY PER MANUFACTURE'S RECOMMENDATIONS TO EXISTING EXTERIOR GLASS WINDOWS / GLAZING
WT-#	WINDOW TREATMENT	PRODUCT: MECO/5 / SHADE CLOTH: ECHO-VEIL SHEER (6750 / 6850) - FLAME RETARDANT COLOR/OPENESS% @ WT-1: [TBD] COLOR/OPENESS% @ WT-2: [TBD]	

[illegible]

SCALE: 1/8"=1'-0"

STAMP	
	
CONSULTANTS	
GODSHALL KANE O'ROURKE ARCHITECTS, LLC 300 Brookside Avenue Brooklyn, NY 11201 Suite 150 Amber Yarbrough, P.E. Amherst, NY 14202 www.gkoarchitects.com T: 215 646 2093	
	
WALDRON MERCY ACADEMY 513 MONTGOMERY AVE. MERION STATION, PA 19066	
REVISIONS	
1	ADDENDUM 1 03-02-2020
2	ADDENDUM 2 03-03-2020
3	ADDENDUM 3 03-04-2020
4	ADDENDUM 4 03-06-2020
5	REVISION 5 01-20-2021
DRAWN BY	MK / LL / AW
REVIEWED BY	MO
JOB #	2449
SHEET TITLE	
INTERIOR FINISHES	
SHEET #	
A7.0	
SCALE	AS NOTED
DATE	02-17-2020



CONFORMED SET 01/20/2021



STAMP

CORSI ASSOCIATES
CONSULTANTS
CONCEIVE. CREATE. CONSTRUCT.
PENNSYLVANIA (866) CORSI-HQ

GODSHALL KANE O'ROURKE ARCHITECTS, LLC
300 Brookside Avenue
Ambler, PA 19002 Suite 150
T: 215.646.2003
www.gkoarchitects.com



WALDRON MERCY ACADEMY
513 MONTGOMERY AVE.
MERION STATION, PA 19066

REVISIONS	
03-04-2020	ADDENDUM #3
01-20-2021	REVISION #5

DRAWN BY	DAS
REVIEWED BY	MIC
JOB #	2449

SHEET TITLE

FOODSERVICE
EQUIPMENT
PLAN

SHEET #

FS-1.0

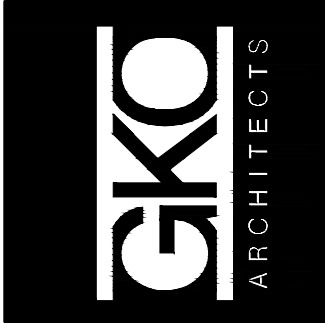
SCALE	1/4" = 1'0"
DATE	02-14-2020

EQUIPMENT SCHEDULE					
ITEM NO.	QTY	DESCRIPTION	MANUFACTURER	MODEL NUMBER	EQUIPMENT REMARKS
01	1	WALK-IN COOLER/FREEZER	AMERICAN PANEL		30" COOLER DOOR
02	1	EVAPORATOR COIL, COOLER	AMERICAN PANEL		
03	1	CONDENSING UNIT, COOLER	AMERICAN PANEL		
04	1	EVAPORATOR COIL, FREEZER	AMERICAN PANEL		
05	1	CONDENSING UNIT, FREEZER	AMERICAN PANEL		
06	1	WIRE SHELVING	METRO	PR2460NK3	
07	3	WIRE SHELVING	METRO	PR1436NK3	
08	1	WIRE SHELVING	METRO	PR1448NK3	
09	1	SINK, MOP	EAGLE GROUP/METAL MASTERS	F1916	
10	1	SHELF, WALL MOUNT	EAGLE GROUP/METAL MASTERS	US0824-16/3	
11	-	SPARE NUMBER			
12	2	WIRE SHELVING	METRO	PR2460NK3	
13	3	WIRE SHELVING	METRO	PR2442NK3	
14	1	BIN, ICE	HOSHIZAKI AMERICA	B-300SF	
15	1	ICE MAKER W/O BIN	HOSHIZAKI AMERICA	KM-520MAJ	
15F	1	FILTER SYSTEM, ICEMAKER	EVERPURE	EV9325-23	
16	1	SINK, HAND, WALL MOUNT	EAGLE GROUP/METAL MASTERS	HSA-10-FAW	
17	1	RANGE, HEAVY DUTY, GAS	GARLAND	M44R	
18	1	STEAMER, PRESSURELESS	CLEVELAND RANGE	24-CGA-10	
18F	1	FILTER SYSTEM, STEAMER	EVERPURE	EV9797-82	
19	1	OVEN, CONVECTION, GAS	BLODGETT	DFG-100 DOUBLE	
20	1	EXHAUST HOOD	CADDY	SHBC-C-W-171-ND-60	
20.1	1	EXHAUST HOOD CONTROL PANEL	CADDY		
20.2	1	FIRE SUPPRESSION SYSTEM	ANSUL	R-102	
21	-	SPARE NUMBER			
22	1	CABINET, HEATED, PASS-THRU	CONTINENTAL REFRIGERATOR	DL1W-SS-PT	
23	1	REFRIGERATOR, UNDERCOUNTER	CONTINENTAL REFRIGERATOR	SW48-U	
24	1	WORK TABLE W/ PREP SINK	EAGLE GROUP/METAL MASTERS	T30120SE	
25	1	REFRIGERATOR, PASS-THRU	CONTINENTAL REFRIGERATOR	DL1RE-SS-PT	
26	1	REFRIGERATOR, AIR CURTAIN TYPE	FEDERAL INDUSTRIES	RSSM478-30SC	
27	3	SHELF, WALL MOUNT	EAGLE GROUP/METAL MASTERS	WSP1236	
28	1	CLEAN DISHTABLE/3-COMPARTMENT SINK	EAGLE GROUP/METAL MASTERS	CUSTOM	
29	1	WAREWASHER, UNDERCOUNTER, HIGH TEMP	HOBART US FOODSERVICE	LXER-1	
30	1	HEATED ZONE MERCHANDISER	HATCO	HZMH-36D	
31	1	DROP-IN, HOT WELLS	LTI	DI-EF-4D-T	
32	1	BUFFET/CAFETERIA, SNEEZE GUARD	BSI, LLC	ZG9930_HEAT_LIGHT_HEAT	
33	1	DROP-IN, COLD WELL	LTI	DI-2050TA-T	
34	1	BUFFET/CAFETERIA, SNEEZE GUARD	BSI, LLC	ZG9930_HEAT_LIGHT_HEAT	
35	1	SERVING COUNTER, MODULAR		CUSTOM	
35.1	1	SERVING COUNTER, MODULAR		CUSTOM	
35.2	1	SERVING COUNTER, MODULAR		CUSTOM	
35.3	1	SERVING COUNTER, MODULAR		CUSTOM	
36	1	REFRIGERATOR, AIR CURTAIN TYPE	FEDERAL INDUSTRIES	RSSM-578SC	
37	-	SPARE NUMBER			
38	1	DROP-IN ICE CREAM FREEZER	DELFIELD	N225P	
39	1	P.O.S. SYSTEM	BY OTHERS	BY OTHERS	
40	-	SPARE NUMBER			
41	-	SPARE NUMBER			
42	2	DROP-IN, HOT WELLS	WELLS	SS-10ULTD	
43	1	BUFFET/CAFETERIA, TABLEWARE STATION	LTI	28-RTE	
44	1	COFFEE BREWER	BUNN-O-MATIC	39900.0020	
44F	1	FILTER, COFFEE BREWER	EVERPURE	EV9275-60	
44.1	2	AIRPOT	BUNN-O-MATIC	32125.0000	
45	1	HOT WATER DISPENSER	MARCO	1000870	
45F	1	FILTER, HOT WATER DISPENSER	EVERPURE	EV9275-60	
46	1	TOASTER, SLOT-TYPE	HATCO	TPT-208	
47	1	OVEN, MICROWAVE	PANASONIC	NE-1054F	
48	1	REFRIGERATOR, REACH-IN	CONTINENTAL REFRIGERATOR	DL1R-SS	
49	1	REFRIGERATOR, REACH-IN	CONTINENTAL REFRIGERATOR	DL2R-SS	
50	1	SOILED DISHTABLE	EAGLE GROUP/METAL MASTERS	SDTL-72-14/3	CUSTOM LENGTH: 64-1/2"
51	1	VENTLESS PIZZA OVEN	TURBOCHEF	HHC2020 VNTLSS	
52	1	FRYER W/FILTER	FRYMASTER	FPH155	
53	1	FOOD WARMER/HOLDING STATION	FRYMASTER	SPREADER CABINET FOR H55	
54	1	PIZZA PREP REFRIGERATOR	TRAULSEN	UPT279	
55	1	WORK TABLE	EAGLE GROUP/METAL MASTERS	T2460SE-B5	
56	1	DROP-IN HEATED SHELF	HATCO	GRSB-36-I	
57	1	BUFFET/CAFETERIA, SNEEZE GUARD	BSI, LLC	ZG9930_HEAT_LIGHT_HEAT	
58	1	DROP-IN SOUP WELL	WELLS	SS-10ULTD	
59	-	SPARE NUMBER			
60	1	WIRE SHELVING	METRO	PR1848NK3	
61	1	WIRE SHELVING	METRO	PR1430NK3	
62	1	WIRE SHELVING	METRO	PR2448NK3	
63	1	RAPID COOK OVEN	TURBOCHEF	I5-9500-1	ADD ALTERNATE

CONFORMED SET 01/20/2021



GODSHALL KANE O'Rourke ARCHITECTS, LLC
300 Brookside Avenue
Ambler Yards - Building 10 - Suite 150
Ambler, PA 19002
T: 215.646.2003
www.gksarchitects.com



WALDRON MERCY ACADEMY
513 MONTGOMERY AVE.
MERION STATION, PA 19066

REVISIONS	
03-04-2020	ADDENDUM #3
01-20-2021	REVISION #5
DRAWN BY	DAS
REVIEWED BY	MIC
JOB #	2449
SHEET TITLE	

FOODSERVICE EQUIPMENT SCHEDULE

SHEET #

FS-1.1

SCALE	1/4" = 1'0"
DATE	02-14-2020



FOODSERVICE PLUMBING PLAN

SHEET #

FS-1.3

SCALE	1/4" = 1'0"
DATE	02-14-2020



FOODSERVICE MECHANICAL PLAN

SHEET #

FS-1.4

SCALE	1/4" = 1'0"
DATE	02-14-2020

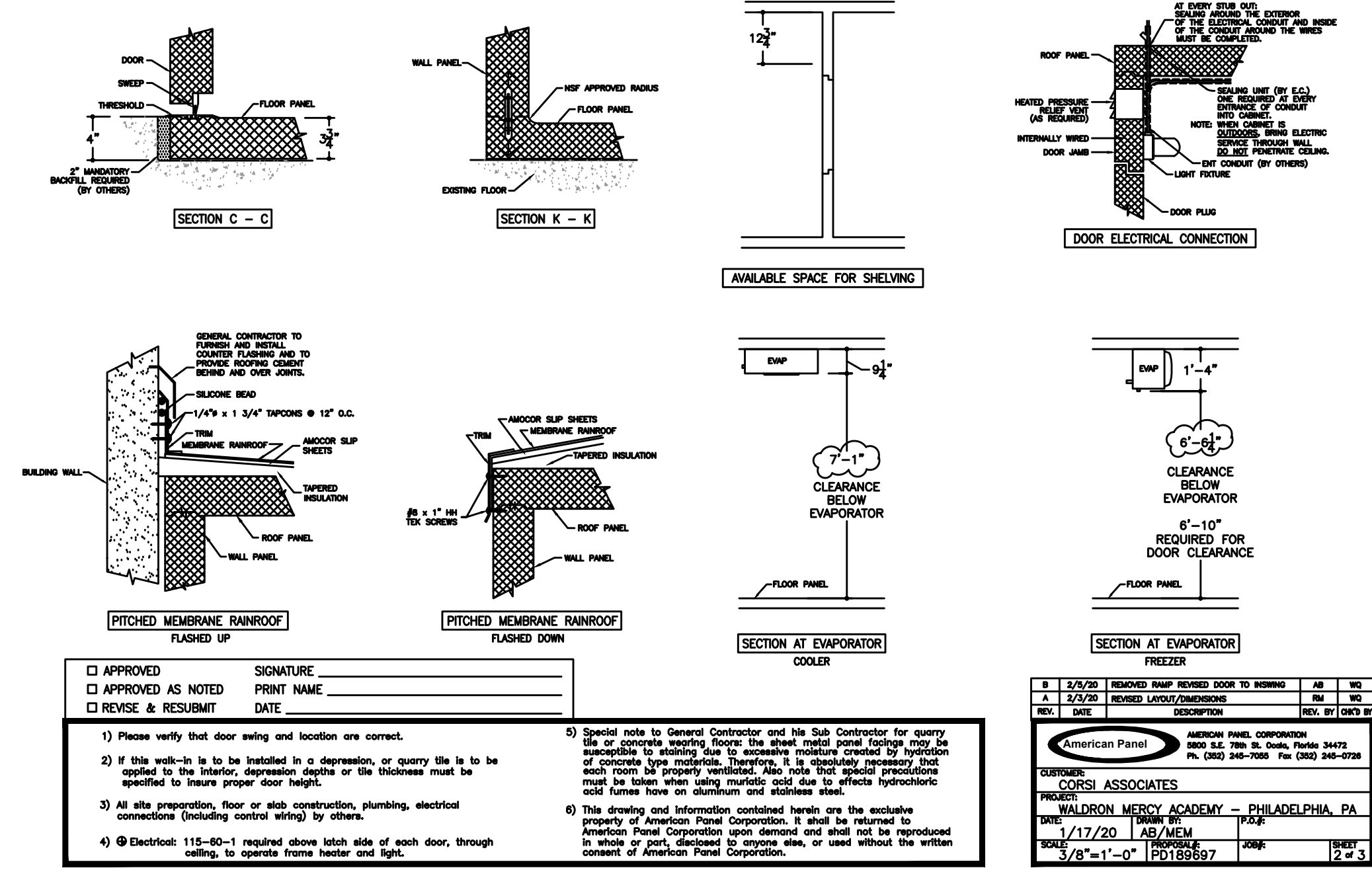
ELECTRICAL SCHEDULE									
ITEM NO.	DESCRIPTION	AMPS	VOLTS	PHASE	DIRECT	PLUG	NEMA	CONN. HT. AFF. (IN.)	ELECTRICAL REMARKS
E-01	WALK-IN COOLER/FREEZER	10.0	120	1	X			DFA	
E-02	EVAPORATOR COIL, COOLER	1.0	208/230	3	X			DFA	
E-03	CONDENSING UNIT, COOLER	8.8	208/230	1	X			DFA	
E-04	EVAPORATOR COIL, FREEZER	1.0	208/230	3	X			DFA	
E-05	CONDENSING UNIT, FREEZER	8.8	208/230	1	X			DFA	
E-15	ICE MAKER W/O BIN	10.6	120	1	X			66	
E-18	STEAMER, PRESSURELESS	2.0	120	1	X			24	DO NOT CONNECT TO GFI OUTLET
E-19	OVEN, CONVECTION, GAS	6.0	120	1	X		5-15P	24	
E-19.1	OVEN, CONVECTION, GAS	6.0	120	1	X		5-15P	48	
E-20	EXHAUST HOOD	10.0	120	1	X				INTERCONNECT TO HOOD, ANSUL SYSTEM & BUILDING FIRE SYSTEM, 24 HR DEDICATED SERVICE
E-20.1	EXHAUST HOOD CONTROL PANEL	5.0	120	1	X			DFA	
E-20.2	FIRE SUPPRESSION SYSTEM	20.0	120	1	X			DFA	
E-22	CABINET, HEATED, PASS-THRU	7.2	208	1	X			DFA	
E-23	REFRIGERATOR, UNDERCOUNTER	2.5	120	1	X		5-15P	6	UTILITY STUBBED UP FROM FLOOR
E-25	REFRIGERATOR, PASS-THRU	5.2	120	1	X			5-15P	DFA
E-26	REFRIGERATOR, AIR CURTAIN TYPE	15.0	208-240	1	X		6-20P	24	
E-29	WAREWASHER, DOOR TYPE, HIGH TEMP	45.4	208-240	3	X			24	
E-30	HEATED ZONE MERCHANDISER	11.6	120/208	1	X		L14-20P	6	UTILITY STUBBED UP FROM FLOOR
E-31	DROP-IN, HOT WELLS	10.8	208	1	X			6	UTILITY STUBBED UP FROM FLOOR
E-32	BUFFET/CAFETERIA, SNEEZE GUARD	6.1	120	1	X			6	UTILITY STUBBED UP FROM FLOOR
E-33	DROP-IN, COLD WELL	6.5	120	1	X		5-15P	6	UTILITY STUBBED UP FROM FLOOR
E-34	BUFFET/CAFETERIA, SNEEZE GUARD	0.5	120	1	X			6	UTILITY STUBBED UP FROM FLOOR
E-36	REFRIGERATOR, AIR CURTAIN TYPE	15.0	208-240	1	X		6-20P	24	
E-38	DROP-IN, FREEZER/ICE CREAM	1.8	120	1	X		5-15P	6	UTILITY STUBBED UP FROM FLOOR
E-39	P.O.S. SYSTEM	12.0	120	1	X		5-15P	6	UTILITY STUBBED UP FROM FLOOR; DATA LINE REQUIRED; KEC TO VERIFY UTILITY REQUIREMENTS
E-41	BUFFET/CAFETERIA, SNEEZE GUARD	1.0	120	1	X			24	DELETED
E-42	DROP-IN, HOT WELLS	6.9	120	1	X			6	
E-44	COFFEE BREWER	11.3	120	1	X		5-15P	48	
E-45	COFFEE/TEA MAKER	14.8	208	1	X		L6-20P	48	
E-46	TOASTER, SLOT-TYPE	12.5	208	1	X		6-15P	48	
E-47	OVEN, MICROWAVE	13.4	120	1	X		5-15P	72	
E-48	REFRIGERATOR, REACH-IN	5.5	120	1	X		5-15P	48	
E-49	REFRIGERATOR, REACH-IN	6.5	120	1	X		5-15P	48	
E-51	OVEN, CONVEYOR	40.0	208	3	X		15-50P	24	
E-52	FRYER, DEEP FAT, GAS W/FILTER	8.0	120	1	X		5-15P	24	
E-53	FRYER, SPREADER CABINET	6.3	120	1	X		5-15P	24	
E-54	REFRIGERATOR, PIZZA PREP	7.5	120	1	X		5-15P	24	
E-56	DROP-IN, HEATED SHELF	6.5	120	1	X		5-15P	6	UTILITY STUBBED UP FROM FLOOR
E-57	BUFFET/CAFETERIA, SNEEZE GUARD	6.1	120	1	X			6	UTILITY STUBBED UP FROM FLOOR
E-58	DROP-IN, HOT WELLS	6.9	120	1	X			24	
E-63	RAPID COOK OVEN	50.0	208/240	1	X		6-50P	6	
E-CV1	CONVENIENCE OUTLET	20.0	120	1	X		5-20P	24	

P L U M B I N G S C H E D U L E											
ITEM NO.	DESCRIPTION	COLD WATER SIZE (IN.)	HOT WATER SIZE (IN.)	WATER CONN. HT. AFF (IN.)	INDIR. DRAIN SIZE (IN.) [B]	DIRECT DRAIN SIZE (IN.) [B]	DIRECT DRAIN HT. AFF (IN.)	SIZE (IN.)	MBTUH	SIZE (IN.)	PLUMBING REMARKS
P-02	EVAPORATOR COIL, COOLER				3/4						DRAIN LOCATED OUTSIDE
P-04	EVAPORATOR COIL, FREEZER				3/4						DRAIN LOCATED OUTSIDE
P-09	SINK, MOP	1/2	1/2	3/6		2	•				DRAIN AT FLOOR
P-14	BIN, ICE				3/4						
P-15	ICE MAKER W/O BIN	1/2		•	3/4						*CW FROM WATER FILTER ITEM #15F
P-15F	FILTER SYSTEM, ICEMAKER	3/4		60							INTERCONNECT WITH ICE MAKER ITEM #15
P-16	SINK, HAND, WALL MOUNT	1/2	1/2	18		1 1/2	24				
P-16.1	SINK, HAND, WALL MOUNT	1/2	1/2	6		1 1/2	24				UTILITY STUBBED UP FROM FLOOR
P-16.2	SINK, HAND, NARROW	1/2	1/2	6		1 1/2	24				
P-17	RANGE, HEAVY DUTY, GAS							3/4	180	30	
P-18	STEAMER, PRESSURELESS	1/2		•	1 1/2			3/4	125	30	*CW FROM WATER FILTER ITEM #18F
P-18.1	STEAMER, PRESSURELESS	1/2		18							
P-18F	FILTER SYSTEM, STEAMER	3/4		18							INTERCONNECT WITH STEAMER ITEM #18
P-19	OVEN, CONVECTION, GAS							3/4	55	30	
P-19.1	OVEN, CONVECTION, GAS							3/4	55	54	
P-24	WORK TABLE W/ PREP SINK	1/2	1/2	6	1 1/2						UTILITY STUBBED UP FROM FLOOR
P-28	SINK, SCULLERY, 3 COMPARTMENTS	1/2	1/2	18	1 1/2						
P-29	WAREWASHER, DOOR TYPE, HIGH TEMP	1/2	1/2	18	1 1/2						
P-31	DROP-IN, HOT WELLS				3/4						
P-33	DROP-IN, COLD WELL				3/4						
P-42	DROP-IN, HOT WELLS				1/2						
P-44	COFFEE BREWER	1/4		•							*CW FROM FILTER ITEM #44F
P-44F	FILTER SYSTEM, COFFEE BREWER	1/4		18							INTERCONNECT WITH COFFEE MAKER ITEM #44
P-45	HOT WATER DISPENSER	1/4		•							*CW FROM FILTER ITEM #45F
P-45F	FILTER SYSTEM, HOT WATER DISPENSER	1/4		18							INTERCONNECT WITH HOT WATER DISPENSER ITEM #45
P-50	DISHTABLE, STRAIGHT	1/2	1/2	18		1 1/2	24				
P-52	FRYER, DEEP FAT, GAS W/FILTER							3/4	80	30	
P-58	DROP-IN, HOT WELLS				1/2						
P-FS	FLOOR SINK					4	•				*DRAIN AT FLOOR
P-AD	AREA DRAIN					3	•				*DRAIN AT FLOOR

MECHANICAL SCHEDULE									
ITEM NO.	HVAC DUCT SIZE (IN)	EXHAUST DUCT SIZE (IN)	HVAC EXHAUST CFM	HVAC EXHAUST SPWG	HVAC MAKE-UP DUCT SIZE (IN)	HVAC MAKE-UP CFM	HVAC MAKE-UP SPWG	DESCRIPTION	HVAC REMARKS
M-20	10" X 26"	3220						EXHAUST HOOD	
M-20B					12" X 19"	1288			(2) MUA DUCTS; 2576CFM TOTAL MUA

CONFORMED SET 01/20/2021

STAMP																	
CONSULTANTS																	
CORSI ASSOCIATES CONCEIVE. CREATE. CONSTRUCT. PENNSYLVANIA (866) CORSI - HQ																	
GODSHALL KANE O'ROURKE ARCHITECTS, LLC 300 Brookside Avenue Ambler, PA 19002 Suite 150 T: 215 646 2003 www.gkoarchitects.com																	
WALDRON MERCY ACADEMY 513 MONTGOMERY AVE. MERION STATION, PA 19066																	
<table border="1"> <thead> <tr> <th colspan="2">REVISIONS</th> </tr> </thead> <tbody> <tr> <td>03-04-2020</td> <td>ADDENDUM #3</td> </tr> <tr> <td>01-20-2021</td> <td>REVISION #5</td> </tr> <tr> <td></td> <td></td> </tr> <tr> <td>DRAWN BY</td> <td>DAS</td> </tr> <tr> <td>REVIEWED BY</td> <td>MIC</td> </tr> <tr> <td>JOB #</td> <td>2449</td> </tr> <tr> <td colspan="2">SHEET TITLE</td> </tr> </tbody> </table>		REVISIONS		03-04-2020	ADDENDUM #3	01-20-2021	REVISION #5			DRAWN BY	DAS	REVIEWED BY	MIC	JOB #	2449	SHEET TITLE	
REVISIONS																	
03-04-2020	ADDENDUM #3																
01-20-2021	REVISION #5																
DRAWN BY	DAS																
REVIEWED BY	MIC																
JOB #	2449																
SHEET TITLE																	
FOODSERVICE UTILITY SCHEDULES																	
SHEET # <h1>FS-1.5</h1>																	
SCALE	1/4" = 1'0"																
DATE	02-14-2020																





CORSI
ASSOCIATES
CONCEIVE. CREATE. CONSTRUCT.
PENNSYLVANIA (866) CORSI - HQ

GODSHALL KANE O'ROURKE ARCHITECTS, LLC
300 Brookside Avenue
Ambler Yards - Building 18 - Suite 150
Ambler, PA 19002
T: 215.646.2003
www.gkoarchitects.com

GKO
ARCHITECTS

513 MONTGOMERY AVE.
MERION STATION, PA 19066

VISIONS	
06-2020	ADDENDUM #4
DRAWN BY	DAS
CHECKED BY	MIC
1#	2449
SHEET TITLE	

FLOOR SINK
LOCATION
FLEXIBILITY

SK-FS-1

DATE	1/4" = 1'0"
DATE	02-14-2020

GENERAL

1. ALL DESIGN, MATERIALS, CONSTRUCTION AND WORKMANSHIP SHALL BE IN ACCORDANCE WITH THE REQUIREMENTS OF THE INTERNATIONAL BUILDING CODE, IBC 2015 EDITION AND ALL OTHER APPLICABLE FEDERAL, STATE AND LOCAL REGULATIONS.
2. THE NOTES ON THESE DRAWINGS ARE NOT INTENDED TO REPLACE SPECIFICATIONS. SEE SPECIFICATIONS FOR REQUIREMENTS IN ADDITION TO GENERAL NOTES. INCONSISTENCIES BETWEEN THESE DRAWINGS AND THE SPECIFICATIONS SHALL BE BROUGHT TO THE ATTENTION OF THE ENGINEER PRIOR TO PROCEEDING WITH THE AFFECTED PORTION OF THE WORK.
3. CONTRACTOR SHALL COORDINATE ALL ARCHITECTURAL, MECHANICAL, ELECTRICAL, PLUMBING AND CIVIL DRAWINGS AND SPECIFICATIONS WORK WITH THE STRUCTURAL CONTRACT DRAWINGS AND SPECIFICATIONS. CONSULT THE APPROPRIATE DRAWINGS FOR LOCATIONS AND DIMENSIONS OF OPENINGS, CHASES, INSERTS, REGLETS, SLEEVES, DEPRESSIONS, AND OTHER DETAILS NOT SHOWN ON STRUCTURAL DRAWINGS. ALL DIMENSIONS AND CONDITIONS MUST BE VERIFIED IN THE FIELD. ANY DISCREPANCIES SHALL BE BROUGHT TO THE ATTENTION OF THE ARCHITECT BEFORE PROCEEDING WITH THE AFFECTED PART OF THE WORK.
4. CONTRACTOR SHALL BE SOLELY RESPONSIBLE FOR DETERMINING AND VERIFYING THE EXISTENCE AND LOCATION OF ALL UTILITIES PRIOR TO THE COMMENCEMENT OF WORK.
5. CONTRACTOR SHALL BE SOLELY RESPONSIBLE FOR DETERMINING AND VERIFYING ALL SITE CONDITIONS AND FIELD VERIFYING DIMENSIONS BEFORE THE COMMENCEMENT OF WORK. THE STRUCTURAL ENGINEER OF RECORD SHALL BE NOTIFIED OF ANY DISCREPANCIES OR DEVIATIONS FROM THE DRAWINGS.
6. THE STRUCTURE IS DESIGNED TO BE SELF-SUPPORTING AND STABLE AFTER THE BUILDING IS COMPLETE. IT IS THE CONTRACTOR'S SOLE RESPONSIBILITY TO DETERMINE ERECTION PROCEDURES AND SEQUENCE TO INSURE THE SAFETY OF THE BUILDING AND ITS COMPONENTS DURING CONSTRUCTION. THIS INCLUDES THE ADDITION OF NECESSARY SHORING, SHEETING, TEMPORARY BRACING, GUYS OR TIE-DOWNS, PROVIDE ALL SHORING AND BRACING REQUIRED TO STABILIZE AND PROTECT EXISTING AND ADJACENT STRUCTURES AND SYSTEMS DURING COURSE OF DEMOLITION AND CONSTRUCTION. SUCH MATERIAL SHALL REMAIN THE PROPERTY OF THE CONTRACTOR AFTER COMPLETION OF THE PROJECT.
7. SECTIONS AND DETAILS SHOWN ON STRUCTURAL DRAWINGS SHALL BE CONSIDERED TYPICAL FOR SIMILAR CONDITIONS. REFER TO TYPICAL DETAILS AS REQUIRED TO COMPLETE THE WORK.
8. ANY CONTRACTOR PERFORMING WORK SHOWN ON THESE DRAWINGS WHICH REQUIRE OUTDOOR CONSTRUCTION, DIGGING, OR DISTURBING THE EARTH ARE REQUIRED TO NOTIFY THE LOCAL EXCAVATION ONE-CALL CENTER AT LEAST THREE BUSINESS DAYS PRIOR TO COMMENCING ANY WORK. THE FOLLOWING NUMBERS ARE PROVIDED AS A COURTESY ONLY:
- PENNSYLVANIA ONE CALL 1.800.242.1176

FOUNDATION

1. ALL FOUNDATIONS HAVE BEEN DESIGNED WITHOUT THE BENEFIT OF A GEOTECHNICAL EVALUATION AND HAVE BEEN DESIGNED USING AN ALLOWABLE PRESUMPTIVE SOIL BEARING PRESSURE OF 1,500 PSF. IF UNSUITABLE OR QUESTIONABLE MATERIAL IS ENCOUNTERED AT THE FOOTING SUBGRADE, THE CONTRACTOR SHALL EMPLOY THE SERVICES OF A GEOTECHNICAL ENGINEER FOR CONFIRMATION OF THE ALLOWABLE SOIL BEARING CAPACITY OR FOR REMEDIATION MEASURES.
2. THE CONTRACTOR SHALL EMPLOY THE SERVICES OF A PROFESSIONAL GEOTECHNICAL ENGINEER LICENSED IN THE PROJECT STATE TO VERIFY THE SPECIFIED ALLOWABLE SOIL BEARING PRESSURE BENEATH ALL FOUNDATIONS.
3. BOTTOM OF ALL FOOTINGS MUST BE INSPECTED AND APPROVED BY A LICENSED GEOTECHNICAL ENGINEER BEFORE PLACING CONCRETE. APPROVAL IN WRITING MUST CONFIRM THAT SOIL IS ADEQUATE TO SAFELY SUSTAIN SPECIFIED SOIL BEARING PRESSURE.
4. AREAS REQUIRING UNDERCUT AND FILL MATERIAL DUE TO THE PRESENCE OF UNSUITABLE MATERIAL SHALL BE BACKFILLED TO THE DESIGN FOOTING SUBGRADE WITH NEW COMPACTED STRUCTURAL FILL.
5. BACKFILLING OF FOUNDATIONS SHALL NOT CREATE AN UNBALANCED CONDITION OF MORE THAN 24 INCHES.
6. COMPACT SOILS TO NOT LESS THAN THE FOLLOWING PERCENTAGES OF MAXIMUM DENSITY OF MODIFIED PROCTOR (ASTM D1557):
- UNDER BUILDING FOUNDATIONS ~ 98%
 - UNDER BUILDING SLABS, STEPS & PAVEMENTS ~ 95%
7. FOOTINGS AND SLABS SHALL BE PLACED ONLY ON A FIRM, DRY, NON-FROZEN SUBGRADE.
8. NO EXCAVATION SHALL BE CLOSER THAN AT A SLOPE OF 2H:1V (TWO HORIZONTAL TO ONE VERTICAL) TO A FOOTING.
9. THE CONTRACTOR SHALL OBSERVE WATER CONDITIONS AT THE SITE AND TAKE THE NECESSARY PRECAUTIONS TO ENSURE THAT THE FOUNDATION EXCAVATIONS REMAIN DRY DURING CONSTRUCTION. ANY SHEETING OR SHORING REQUIRED FOR DEWATERING SHALL BE THE RESPONSIBILITY OF THE CONTRACTOR.
10. SLABS ON GRADE MAY BE SUPPORTED ON FIRM SUITABLE NATURAL SOILS, OR ON COMPACTED STRUCTURAL FILL FOLLOWING STRIPPING OF TOPSOIL, VEGETATION, ASPHALT AND ANY SOFT OR DISTURBED SOILS WITHIN THE BUILDING AREA. A WASHED GRAVEL OR CRUSHED STONE LAYER CORRESPONDING TO AASHTO NO. 57 AGGREGATE SHOULD BE USED BENEATH ALL FLOOR SLABS ON GRADE. REFER TO PLAN FOR TYPICAL SLAB NOTES.
11. GRADE AWAY FROM THE FOUNDATION WALLS AND COORDINATE THE FINAL SITE GRADING WITH THE CIVIL DRAWINGS.
12. STEP FOOTINGS DOWN AT 2H:1V TO PASS UNDER ALL PIPES UNLESS NOTED OTHERWISE.
13. EXTEND BOTTOM OF EXTERIOR FOOTINGS AT LEAST 3 FEET BELOW THE EXTERIOR FINISH GRADE FOR PROTECTION AGAINST FROST.

CONCRETE

1. ALL REINFORCED CONCRETE SHALL BE DESIGNED, DETAILED AND PLACED IN ACCORDANCE WITH THE REQUIREMENTS OF ACI 318, BUILDING CODE REQUIREMENTS FOR REINFORCED CONCRETE, LATEST EDITION.
2. NORMAL WEIGHT CONCRETE SHALL BE IN ACCORDANCE WITH THE FOLLOWING SPECIFICATIONS:
- | | | |
|---|--|-------------------------------------|
| TYPE I PORTLAND CEMENT
28-DAY COMPRESSIVE STRENGTH (f' _c): | SLAB ON GRADE:
FOOTINGS:
FOUNDATION WALLS & PIERS: | 4,000 PSI
4,000 PSI
4,000 PSI |
|---|--|-------------------------------------|
- MAXIMUM AGGREGATE SIZE: 1 INCH
MAXIMUM SLUMP: 3 INCHES +/- 1 INCH
3. CONCRETE EXPOSED TO WEATHER SHALL HAVE AIR ENTRAINMENT IN ACCORDANCE WITH ACI 318, FOR SEVERE EXPOSURE.
4. MAXIMUM WATER-CEMENT RATIO (w/c) SHALL BE AS FOLLOWS:
w/c MAX = 0.50 FOR f'_c = 4,000 PSI (NON AIR ENTRAINED)
w/c MAX = 0.45 FOR ALL AIR ENTRAINED CONCRETE EXPOSED TO FREEZE/THAW
5. THE RECOMMENDATIONS CONTAINED IN ACI COMMITTEE REPORT 306R, COLD WEATHER CONCRETING, LATEST EDITION, SHALL BE OBSERVED.
6. THE RECOMMENDATIONS CONTAINED IN ACI COMMITTEE REPORT 305R, HOT WEATHER CONCRETING, LATEST EDITION, SHALL BE OBSERVED.
7. ALL REINFORCING STEEL SHALL CONFORM TO THE REQUIREMENTS OF ASTM A615, GRADE 60 DEFORMED BARS.
8. LAP ALL BARS MINIMUM 40 DIAMETERS.
9. REINFORCING STEEL DIMENSIONS ARE TO THE CENTERLINE OF THE BAR UNLESS NOTED OTHERWISE. COVER DISTANCES ARE TO THE OUTSIDE FACE OF THE BAR.
10. UNLESS NOTED OTHERWISE ON THE DRAWINGS, UTILIZE THE FOLLOWING FOR REINFORCEMENT CLEARANCES:
- | | |
|---|--|
| CONCRETE PLACED DIRECTLY ON EARTH, FOOTINGS:
SLABS, FROM TOP UNLESS OTHERWISE NOTED:
FORMED SURFACES EXPOSED TO WEATHER OR EARTH: | 3" COVER ALL AROUND
1"
1 1/2" (#5 BAR OR SMALLER)
2" (#6 BAR OR LARGER) |
| CONCRETE NOT EXPOSED TO WEATHER:
SLABS, WALLS AND JOISTS:
BEAMS, COLUMNS: | 1 1/2" (#14 OR #18 BARS)
3/4" (#11 OR SMALLER)
1 1/2" |
11. WELDED WIRE FABRIC SHALL CONFORM TO THE REQUIREMENTS OF ASTM A1064. MINIMUM SIZE SHALL BE 6x6-W1.4xW1.4.
12. INSTALL WELDED WIRE FABRIC IN LENGTHS AS LONG AS PRACTICABLE. LAP ADJOINING PIECES AT LEAST ONE FULL MESH AND LACE SPLICES WITH WIRE. OFFSET LAPS OF ADJOINING WIDTHS TO PREVENT CONTINUOUS LAPS IN EITHER DIRECTION.
13. REINFORCEMENT SHALL BE DETAILED, FABRICATED AND PLACED IN ACCORDANCE WITH ACI 315, LATEST EDITION AND AS PER CRSI MANUAL OF STANDARD PRACTICE, LATEST EDITION.
14. THE PLACEMENT OF THE STEEL REINFORCEMENT SHALL BE REVIEWED BY AN ENGINEER OR QUALIFIED INSPECTION AGENCY.
15. CONTRACTOR SHALL PROVIDE ADEQUATE BRACING FOR ALL WALLS AND PIERS AS REQUIRED DURING BACKFILLING AND COMPACTION.
16. CONCRETE SHALL BE DEPOSITED AS NEARLY AS PRACTICABLE IN ITS FINAL POSITION TO AVOID SEGREGATION DUE TO REHANDLING. IMMEDIATELY AFTER DEPOSITING, CONCRETE SHALL BE COMPACTED BY MEANS OF MECHANICAL AGITATION TO PREVENT THE FORMATION OF VOIDS. EXTERNAL VIBRATION WILL NOT BE PERMITTED. THE PLACING OF CONCRETE SHALL BE CARRIED ON AT SUCH A RATE THAT CONCRETE IS AT ALL TIMES PLASTIC AND FLOWS READILY INTO SPACES BETWEEN BARS. CONCRETE SHALL NOT BE PLACED ON CONCRETE WHICH HAS ACQUIRED ITS INITIAL SET. CONCRETE WHICH HAS CONTAINED ITS MIXING WATER MORE THAN 1 1/2 HOURS SHALL NOT BE DEPOSITED IN THE WORK. (ONE HOUR WHEN AIR TEMPERATURE IS ABOVE 75 F.)
17. FINISHING CONCRETE: ALL CONCRETE SURFACES SHALL BE TRUE AND EVEN, FREE FROM HONEYCOMBING, STONE POCKETS AND EXCESSIVE DEPRESSIONS, PROJECTIONS, AND AIR POCKETS. ALL EXPOSED CONCRETE EDGES SHALL BE CHAMFERED 1 INCH X 1 INCH UNLESS NOTED OTHERWISE ON THE DRAWINGS.
18. HORIZONTAL SURFACES SHALL BE CAREFULLY FINISHED TO THE REQUIRED ELEVATIONS, AND SHALL BE THOROUGHLY WORKED AND FINISHED AS NOTED.
19. FINISHES:
- STEEL TROWEL FINISH - FOR ALL FLOORS
 - BROOM FINISH - FOR EXTERIOR STAIRS AND CONCRETE SIDEWALKS AND PAVING.
 - GROUT CLEANED FINISH - FOR ALL OTHER SURFACES EXPOSED TO VIEW.
20. CURING OF CONCRETE: APPLY LIQUID MEMBRANE-FORMING COMPOUND FOR CURING AND SEALING CONCRETE. PRODUCT SHALL BE ASTM C309, TYPE I-D, WITH FUGITIVE DYE; SEALTIGHT CS-309 BY W.R. MEADOWS, 'KURE-N-SEAL' BY SONNEBORN OR APPROVED EQUAL. COMPOUNDS SHALL NOT DISCOLOR CONCRETE SURFACES.
21. UNHARDENED CONCRETE SHALL BE PROTECTED FROM HEAVY RAINS OR FLOWING WATER. ALL CONCRETE SHALL BE ADEQUATELY PROTECTED FROM MECHANICAL INJURY.
22. CONTROL JOINTS FOR THE SLAB ON GRADE SHALL BE LOCATED AS SHOWN ON FOUNDATION PLAN.
23. PROVIDE GALVANIZED STEEL SLEEVES WHERE PIPES PASS THROUGH EXTERIOR CONCRETE WALLS, FOOTINGS, BEAMS OR SLABS. PROVIDE PVC SLEEVES WHERE PIPES PASS THROUGH INTERIOR CONCRETE WALLS, BEAM OR SLABS. SLEEVE SHALL BE 2 INCHES LARGER DIAMETER THAN THE PIPE PASSING THROUGH THE CONSTRUCTION.
24. PRIOR TO PLACING NEW CONCRETE OVER EXISTING CONCRETE, CONTRACTOR SHALL INTENTIONALLY ROUGHEN THE EXISTING SURFACES WHERE CONCRETE IS TO BE PLACED. APPLY SIKADUR 32 HI-MOD BONDING AGENT OR APPROVED EQUAL TO EXISTING CONCRETE SURFACES IN ACCORDANCE WITH MANUFACTURER'S RECOMMENDATIONS.
25. COMPLETE SHOP DRAWINGS AND SCHEDULES OF ALL REINFORCING STEEL SHALL BE PREPARED BY THE CONTRACTOR AND SUBMITTED TO THE ENGINEER FOR REVIEW.

MASONRY

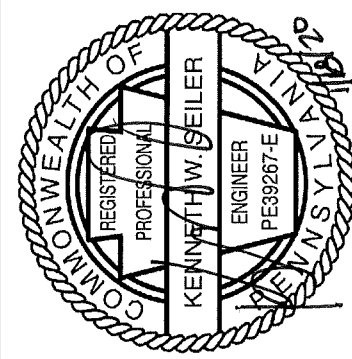
1. ALL MATERIALS, CONSTRUCTION AND WORKMANSHIP SHALL COMPLY WITH THE TMS 402/602 BUILDING CODE REQUIREMENTS AND SPECIFICATIONS FOR MASONRY STRUCTURES AS PUBLISHED BY THE MASONRY SOCIETY (TMS).
2. HOLLOW LOAD-BEARING NORMAL WEIGHT CONCRETE MASONRY UNITS (CMU) SHALL CONFORM TO THE REQUIREMENTS OF ASTM C90, GRADE N, TYPE I, INCLUDING STRETCHERS AND CORNER BLOCKS, UNLESS NOTED OTHERWISE.
3. MINIMUM NET AREA COMPRESSIVE STRENGTH OF CONCRETE MASONRY UNITS SHALL BE 1,900 PSI.
4. MINIMUM NET AREA COMPRESSIVE STRENGTH OF MASONRY (f_m) SHALL BE 1,500 PSI.
5. CMU SHALL BE LAID IN RUNNING BOND, UNLESS NOTED OTHERWISE ON THE ARCHITECTURAL DRAWINGS.
6. MORTAR FOR BLOCK MASONRY SHALL CONFORM TO THE REQUIREMENTS OF ASTM C270, TYPE M OR S. MORTAR FOR EXTERIOR BRICK VENEER SHALL CONFORM TO THE REQUIREMENTS OF ASTM C270, TYPE N (EXCEPTION: THOSE PORTIONS OF THE BRICK VENEER IN CONTACT WITH SOIL SHALL BE LAID WITH MORTAR CONFORMING TO THE REQUIREMENTS OF ASTM C270, TYPE M).
7. GROUT SHALL CONFORM TO THE REQUIREMENTS OF ASTM C476 UNLESS NOTED OTHERWISE:
- a. 3,000 PSI 28 DAY COMPRESSIVE STRENGTH
 - b. 8 INCH TO 10 INCH SLUMP
 - c. COURSE GROUT (1/2 INCH PEA GRAVEL) FOR CMU LARGER THAN 8 INCHES
 - d. FINE GROUT (SAND AGGREGATE) FOR 8" CMU AND SMALLER
8. ALL STEEL REINFORCING BARS SHALL CONFORM TO THE REQUIREMENTS OF ASTM A615, GRADE 60.
9. STANDARD LAP LENGTH OF GRADE 60 REINFORCING BARS SHALL BE 48 BAR DIAMETERS, UNLESS NOTED OTHERWISE.
10. ALL LOAD BEARING CMU WALLS SHALL CONTAIN JOINTS WHICH ARE FULLY BEDDED, INCLUDING HEAD JOINTS.
11. SEE ARCHITECTURAL DRAWINGS FOR CONTROL JOINTS.
12. PROVIDE HOT-DIPPED GALVANIZED, TRUSS TYPE, HORIZONTAL WALL REINFORCING WITH 9 GA. (W1.7) SIDE RODS AND CROSS TIES. HORIZONTAL JOINT REINFORCING SHALL BE PLACED IN MASONRY WALLS AT 16 INCHES ON CENTER MAXIMUM. SPACE HORIZONTAL JOINT REINFORCEMENT AT 8 INCHES ON CENTER IN ALL PARAPETS. USE SHOP FABRICATED SPECIAL PIECES AT ALL CORNERS AND TEES. FOR VENEER USE DUR-O-EYE TRUSS TYPE OR EQUAL.
13. ALL COURSES BELOW GRADE SHALL BE LAID IN A FULL MORTAR BED AND GROUTED SOLID, UNLESS NOTED OTHERWISE.
14. ALL IVARY BLOCK SHALL BE FILLED SOLID WITH 3,000 PSI CONCRETE.
15. THE TOP COURSE OF ALL WALLS SHALL BE BOND BEAMS, WITH TWO (2) #5 BOTTOM BARS, UNLESS NOTED OTHERWISE. PROVIDE A MINIMUM OF (2) #4 BARS AT THE ENDS OF ALL WALLS AND ON EACH SIDE OF EACH MASONRY OPENING.
16. FILL ALL BOND BEAMS WITH 3,000 PSI CONCRETE USING PEA GRAVEL AGGREGATE.
17. WHERE VERTICAL BARS TERMINATE AT BOND BEAM, PROVIDE STANDARD HOOK INTO BOND BEAM.
18. LOCATION OF LINTELS AT MASONRY OPENINGS SHALL BE COORDINATED WITH THE ARCHITECTURAL DRAWINGS.
19. REINFORCE MASONRY WALLS AS INDICATED ON PLANS AND DETAILS. REINFORCE ALL MASONRY OPENINGS PER TYPICAL DETAILS.
20. REINFORCEMENT SHALL BE EMBEDDED INTO THE FOUNDATION IN ACCORDANCE WITH THE CONTRACT DRAWINGS. ALL REINFORCEMENT SHALL BE INSTALLED DIRECTLY IN THE CENTER OF THE CMU, UNLESS NOTED OTHERWISE.
21. ALL MASONRY WALL CORES CONTAINING VERTICAL REINFORCING SHALL BE GROUTED SOLID.
22. BLOCK TO BE GROUTED SHALL HAVE CELLS WITH WEBS ALIGNED FOR FULL WALL HEIGHT.
23. PROVIDE PIPE SLEEVES OF APPROPRIATE SIZE AND MATERIAL FOR ALL PENETRATIONS PASSING THROUGH MASONRY WALLS. INCLUDE ANY MISCELLANEOUS EMBEDDED ITEMS FOR ALL TRADES WHICH MUST BE SET IN MASONRY WALLS AS SHOWN ON DRAWINGS.
24. CMU WALLS SHALL BE CONSTRUCTED IN 5 FEET (MAX) VERTICAL LIFTS, THEN GROUTED. DURING THE GROUTING PROCESS, EACH CORE SHALL BE VIBRATED USING A "PENCIL" VIBRATOR ONLY. DAMAGE TO THE CMU CAN OCCUR IF ANY OTHER VIBRATOR IS USED. REMOVE EXCESS WET GROUT FROM THE TOP OF THE MASONRY IN ORDER TO MAINTAIN A LEVEL BLOCK SURFACE.
25. MASONRY WHICH HAS BEEN SUBJECTED TO EXCESSIVE HEAT AND DEHYDRATION BEFORE GROUTING SHALL BE HOSED DOWN IN MODERATION TO MOISTEN THE CMU. DO NOT CAUSE WATER TO POND INSIDE THE CORES.
26. AIR SPACE (CAVITY) BETWEEN VENEER AND CMU BACKUP WALL SHALL BE AS SHOWN ON THE ARCHITECTURAL DRAWINGS. KEEP EXTERIOR BRICK CAVITIES CLEAN OF MORTAR DROPPINGS.
27. HOT AND COLD WEATHER CONSTRUCTION SHALL BE IN ACCORDANCE WITH ACI 530/530.1.
28. PROVIDE VERTICAL MASONRY CONTROL JOINTS AT MAXIMUM 25 FEET ON CENTER UNLESS DETAILED OTHERWISE ON ARCHITECTURAL DRAWINGS. COORDINATE LOCATION OF CONTROL JOINTS WITH ARCHITECT.
29. COMPLETE SHOP DRAWINGS AND SCHEDULES OF ALL CMU REINFORCING STEEL SHALL BE PREPARED BY THE CONTRACTOR AND SUBMITTED TO THE ENGINEER FOR REVIEW.

STRUCTURAL STEEL

1. ALL STRUCTURAL STEEL SHALL BE DESIGNED, FABRICATED AND ERECTED IN ACCORDANCE WITH THE AISC STEEL CONSTRUCTION MANUAL LATEST EDITION.
2. ALL STRUCTURAL STEEL SHALL BE IN ACCORDANCE WITH THE LATEST AISC AND ASTM STANDARDS AND SPECIFICATIONS:
- | | |
|---|--|
| W-SHAPES
ANGLE, CHANNEL, PLATES AND BARS
RECTANGULAR HSS
HSS PIPE
ANCHOR RODS | ASTM A992, Fy = 50 KSI
ASTM A36, Fy = 36 KSI
ASTM A500, GR. B, Fy = 46 KSI
ASTM A500, GR. B, Fy = 42 KSI
ASTM F1554, Fy = 36 |
|---|--|
3. WELDING SHALL CONFORM TO THE STRUCTURAL WELDING CODE - AWS D1.1, LATEST EDITION. SHOP AND FIELD WELDING SHALL BE PERFORMED BY WELDERS QUALIFIED AS DESCRIBED IN THE AMERICAN WELDING SOCIETY'S "STANDARD QUALIFICATION PROCEDURE" (AWS D1.1) TO PERFORM THE TYPE OF WORK REQUIRED. WELDING ELECTRODES SHALL BE E70XX. PRE-HEATING OF MEMBERS PRIOR TO WELDING SHALL BE IN ACCORDANCE WITH AWS D1.1, AS REQUIRED.
4. ALL WELDS SHALL BE 3/16 INCH FILLET WELDS, UNLESS NOTED OTHERWISE.
5. ALL EXTERIOR EXPOSED STEEL INCLUDING LINTELS, SHELF ANGLES AND CONCRETE EMBEDMENTS SHALL BE HOT-DIPPED GALVANIZED. ANY POINTS OF WELDING SHALL BE TOUCHED UP IN THE FIELD WITH A ZINC-RICH PAINT.
6. NO FIELD BURNING OF BOLT HOLES WILL BE PERMITTED. FIELD HOLES SHALL BE DRILLED AND/OR REAMED.
7. THERE SHALL BE NO FIELD CUTTING OF STRUCTURAL STEEL MEMBERS FOR THE WORK OF OTHER TRADES WITHOUT THE PRIOR APPROVAL OF THE STRUCTURAL ENGINEER OF RECORD.
8. FIELD CONNECTIONS SHALL BE BOLTED USING 3/4 INCH DIAMETER ASTM A325-N HIGH STRENGTH BOLTS UNLESS NOTED OTHERWISE.
9. COORDINATE ALL OPENING SIZES AND LOCATIONS WITH MECHANICAL CONTRACTOR PRIOR TO STEEL FABRICATION.
10. CONTRACTOR SHALL PREPARE, CHECK AND SUBMIT DETAILED STRUCTURAL STEEL SHOP DRAWINGS OF WORK FOR ENGINEER'S REVIEW PRIOR TO FABRICATION.
11. ALL STEEL SHALL HAVE ONE SHOP COAT OF RUST INHIBITIVE PAINT. DELETE PAINT APPLICATION WHERE STEEL IS TO RECEIVE SPRAYED-ON FIREPROOFING, CONCRETE ENCASEMENT OR GALVANIZING.
12. ALL ALUMINUM AND STEEL MEMBERS SHALL BE TREATED OR PROPERLY SEPARATED TO PREVENT GALVANIC AND CORROSIVE EFFECTS.
13. STEEL FABRICATOR IS SOLELY RESPONSIBLE FOR SURVEYING AND VERIFICATION OF EXISTING CONDITIONS INCLUDING, BUT NOT LIMITED TO THE LOCATION, ELEVATION, AND DIMENSIONS OF EXISTING WALLS AND FRAMING.

STRUCTURAL DRAWING LIST										
<div>WALDRON MERCY ACADEMY</div> <div>513 MONTGOMERY AVE. MERION STATION, PA 19066</div> <div>RCG PROJECT CONTACT KENNETH W. SEILER, PE T: 215.361.2301 C: 215.692.0557 KENS@RINGCONSULTING.COM</div>			<div>ISSUE</div> <div><input type="radio"/> FOR REFERENCE AND COORDINATION ONLY</div> <div><input checked="" type="radio"/> ISSUED</div>	<div>2/17/2020 ISSUED FOR BID</div>	<div>3/4/2020 ADDENDUM #3 / 3</div>	<div>1/20/2021 CONFORMED SET</div>	<div></div>	<div></div>	<div></div>	
DRAWING LIST			REVISION	-	1	2	3	4	5	6
DWG No.	DRAWING TITLE									
S-0.1	COVER SHEET			●	●	●				
S-1.0	PARTIAL FOUNDATION PLAN & DETAILS			●	●	●				
S-1.1	PARTIAL 2ND FLOOR FRAMING PLAN & DETAILS			●	●	●				

BUILDING CODE: IBC 2015 RISK CATEGORY: III	
DESIGN LOAD SCHEDULE (ALL LOADS SHOWN ARE IN PSF)	
FLOOR DEAD LOAD:	20 PSF
FLOOR LIVE LOAD:	100 PSF (CAFETERIA, KITCHEN, CORRIDORS)
SNOW LOAD DESIGN DATA	
GROUND SNOW LOAD:	Pg = 30 PSF
WIND LOAD DESIGN DATA - SCREEN WALLS	
BASIC WIND SPEED: (3-SECOND GUST) - ULTIMATE	V = 120 mph
ALLOWABLE STRESS DESIGN WIND SPEED:	VASD = 93 mph
WIND EXPOSURE CATEGORY:	C
BASE PRESSURE:	qh = 33.5 PSF (PLT) 20.1 PSF (ASD)
GEOTECHNICAL DESIGN DATA	
ALLOWABLE SOIL BEARING PRESSURE:	1,500 PSF (PRESUMPTIVE)



RING CONSULTING GROUP, P.C.
STRUCTURAL ENGINEERING | PROJECT MANAGEMENT
132 WEST THIRD STREET, LANSDALE, PENNSYLVANIA 19046
TEL: 215.361.2301
WWW.RINGCONSULTING.COM
These documents are property of Ring Consulting Group, P.C. and may not be used, copied, or distributed without the written consent of Ring Consulting Group, P.C. or the Ring Group parent company.
RCG PROJECT - #19-1898 KENNETH W. SEILER, P.E.
PA LICENSE #FE-09267-E



GODSHALL KANE O'ROURKE ARCHITECTS, LLC
300 Brookside Avenue
Ambler, PA 19002-1902 Suite 150
Tel: 215.646.2003
www.gkoarchitects.com



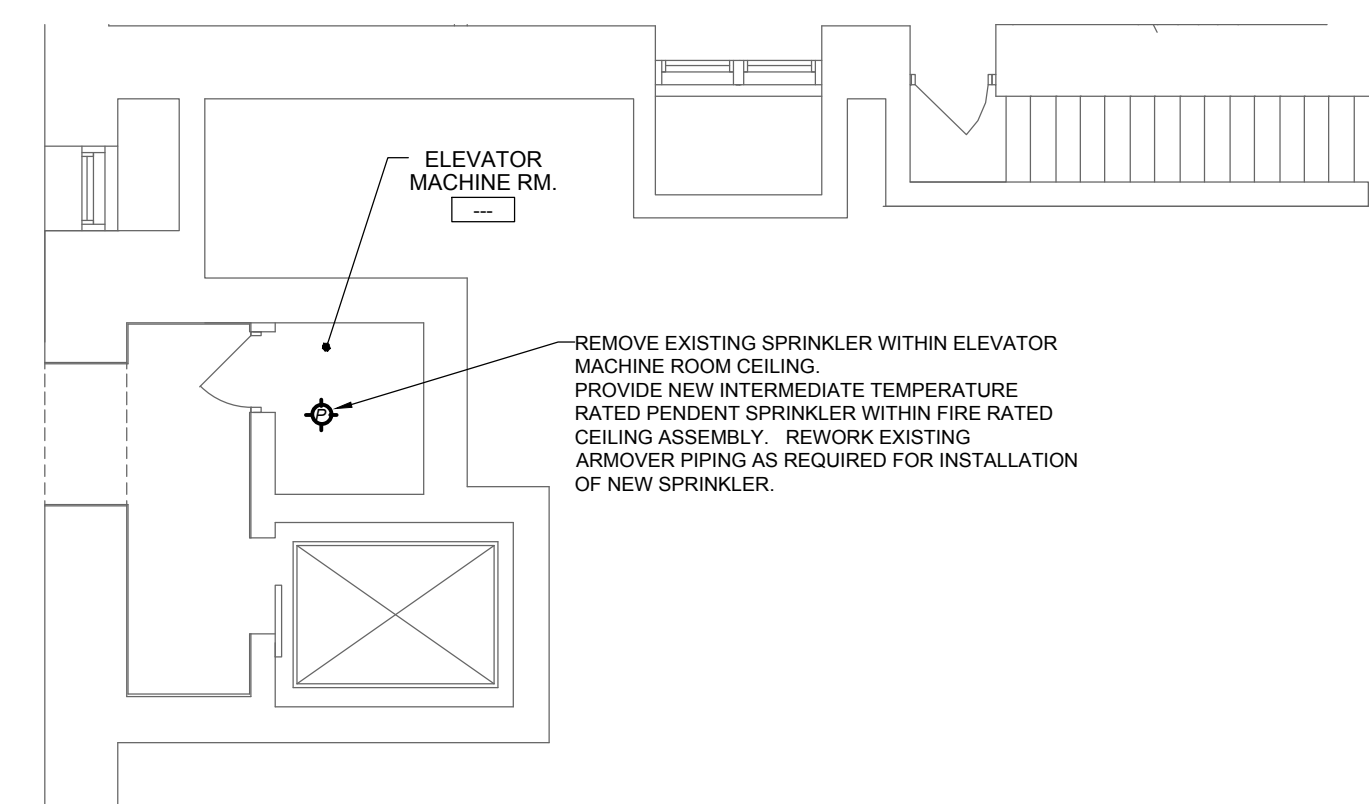
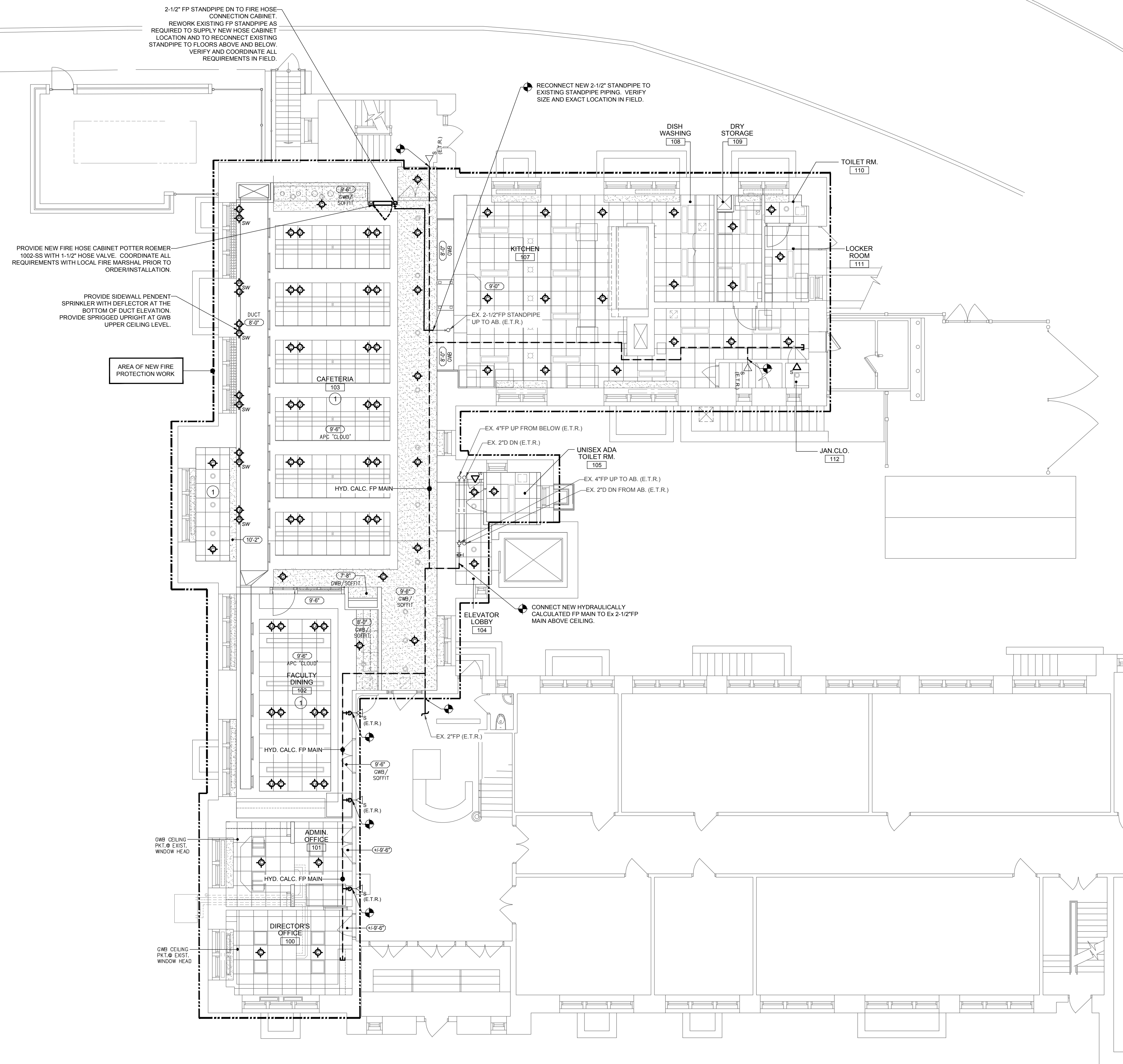
WALDRON MERCY ACADEMY
513 MONTGOMERY AVE.
MERION STATION, PA 19066

REVISIONS	
2-17-2020	ISSUED FOR BID
3-4-2020	ADDENDUM #3
1-20-2021	CONFORMED SET
DRAWN BY	SDP
REVIEWED BY	KWS
JOB #	2449

SHEET TITLE

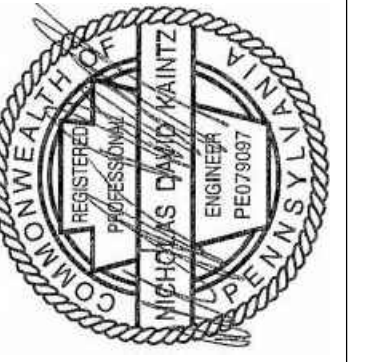
COVER SHEET

SHEET #	
S-0.1	
SCALE	AS NOTED
DATE	01-08-2020



DRAWING NOTE LEGEND - FIRE PROTECTION

- ① PROVIDE ADDITIONAL SPRIGGED UPRIGHT SPRINKLERS ABOVE FLOATING CLOUD CEILING. PROVIDE SPACING IN ACCORDANCE WITH NFPA-13.



sha **SNYDER HOFFMAN
ASSOCIATES, INC.**
MECHANICAL ELECTRICAL CONSULTING ENGINEERS
1005 W. LEHIGH STREET BETHLEHEM, PA 18018
610.694.8020 | WWW.SNYDERHOFFMAN.COM

GOODSHALL KANE O'Rourke ARCHITECTS, LLC
300 Brookside Avenue
Ambler Yards - Building 18 - Suite 150
Ambler, PA 19002
T: 215.646.2003 www.gkoarchitects.com



WALDRON MERCY ACADEMY
513 MONTGOMERY AVE.
MERION STATION, PA 19066

REVISIONS	
DRAWN BY	KJF
REVIEWED BY	TPD
JOB #	2449
SHEET TITLE	

FLOOR PLANS -
FIRE
PROTECTION

SHEET #

FP-2.1

SCALE	AS NOTED
DATE	03-05-2020

CONFORMED SET - 01-20-2021